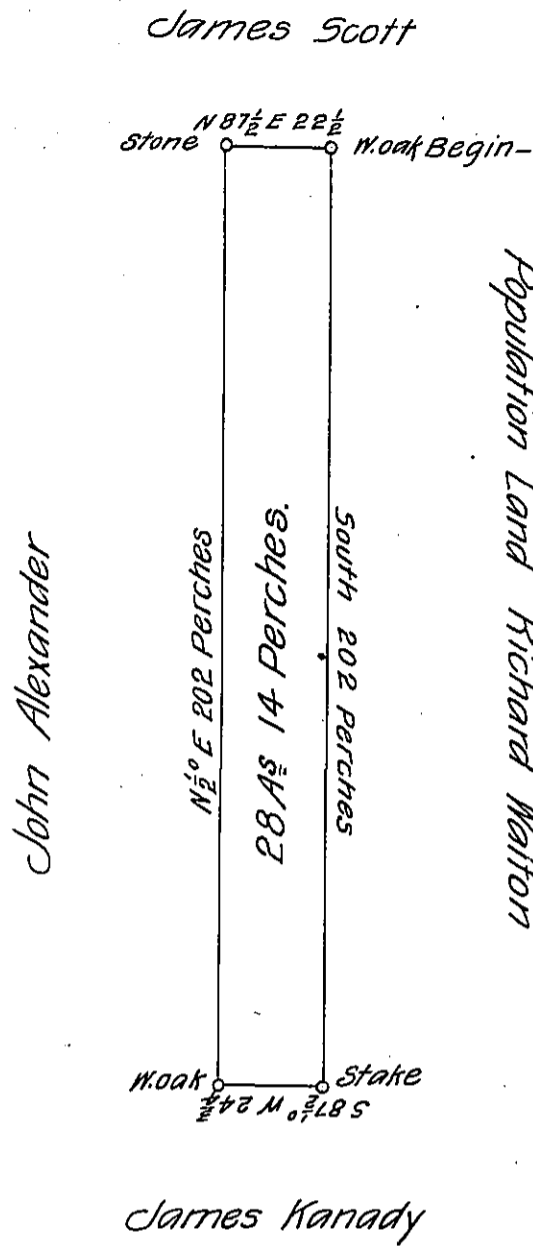


(Chippewa)  
BEAVER ✓



Population Land Richard Walton  
28.2 - 822.0  
(2)

The above draft represents a Survey made the 25<sup>th</sup> of December A. D. 1831 for John and James Mitchel in pursuance of their actual settlement and improvement<sup>#</sup> situate on the Waters of Bradens Run bounded as above Containing twenty eight acres fourteen perches and the allowance of six per cent. Situate in South Beaver township Beaver County.

John Bryan D.S

To Jacob Spangler Esq:  
Surveyor General.

<sup>#</sup> and Warrant dated the 15<sup>th</sup> December 1834.

IN TESTIMONY that the above is a copy of the original remaining on file in the Department of Internal Affairs of Pennsylvania, made conformably to an Act of Assembly approved the 16th day of February, 1833, I have hereunto set my Hand and caused the Seal of said Department to be affixed at Harrisburg, this sixteenth day of January 1906.

*Isaac R. Brown*  
Secretary of Internal Affairs.